



FIORANTE
HOMES+COMMERCIAL

www.fiorantehomes.ca

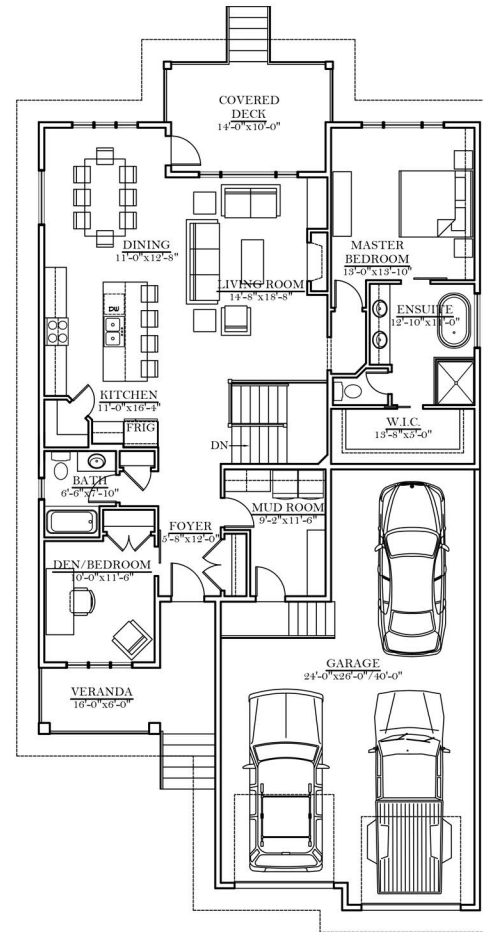
p: 306.569.3456 f: 306.775.0340



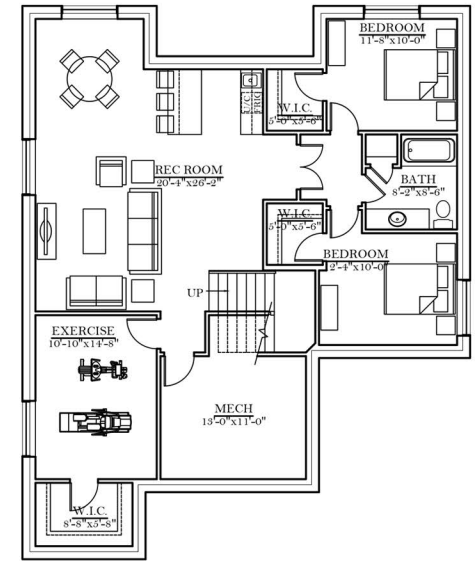
THE 'MATERA'
1581 SQ. FT.

FEATURES:

- 40' Width, 49'-6" Depth
- 4 Bedrooms or optional den
- 3 Bathrooms
- Main Floor Laundry in Mudroom
- Kitchen with Island and Corner Pantry
- Finished Basement
- 3-Car Garage



MAIN FLOOR PLAN
1581 SQ. FT.



BASEMENT PLAN
1581 SQ. FT.

'Built With Pride'

Copyright of this plan remains with Fiorante Homes & Commercial Ltd. Duplication of this plan in whole or in part is strictly prohibited, without prior written permission of Fiorante Homes & Commercial Ltd.

