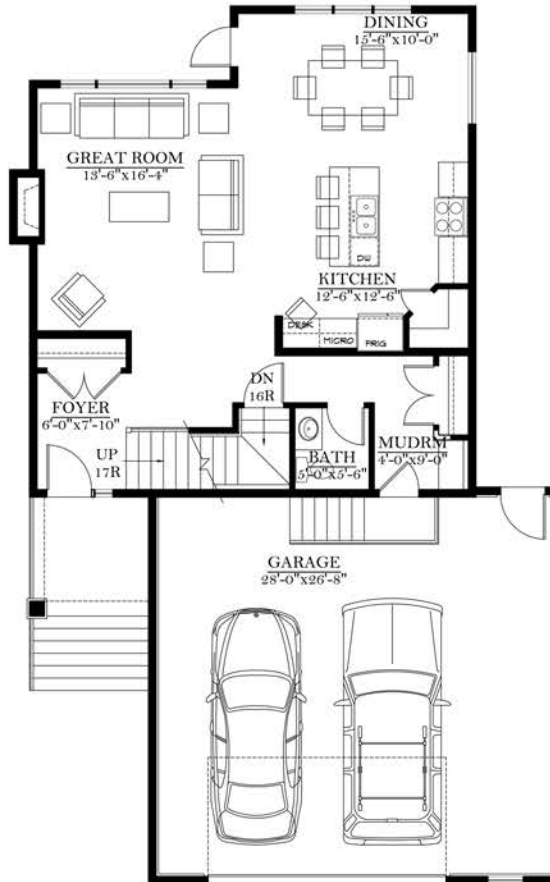




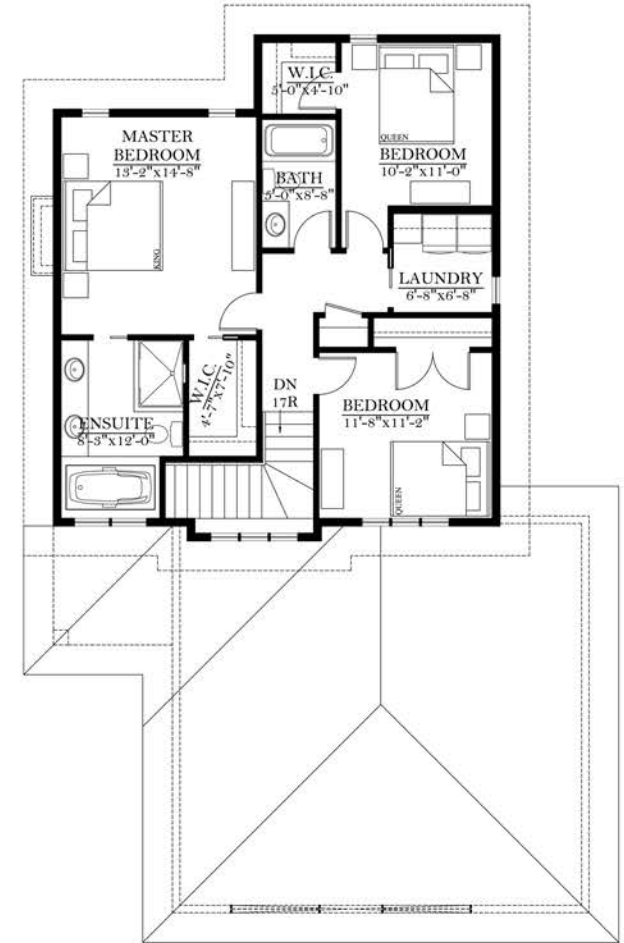
THE 'NIXON'
1854 SQ. FT.

FEATURES:

- 36' Width, 59' Depth
- 3 Bedrooms
- 2.5 Bathrooms
- Large 5 piece ensuite
- Well layed out kitchen
- Large open layout
- 2-Car oversized Garage



MAIN FLOOR PLAN
923 SQ. FT.



SECOND FLOOR PLAN
932 SQ. FT.

'Built With Pride'